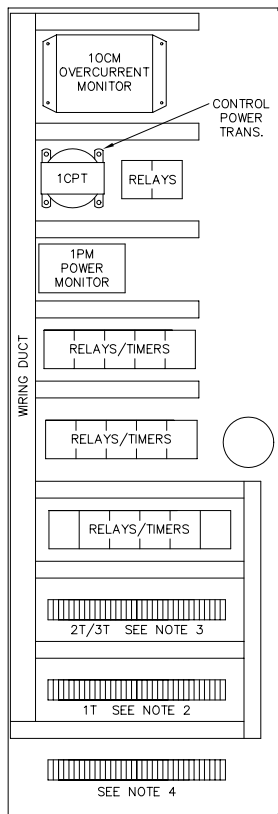
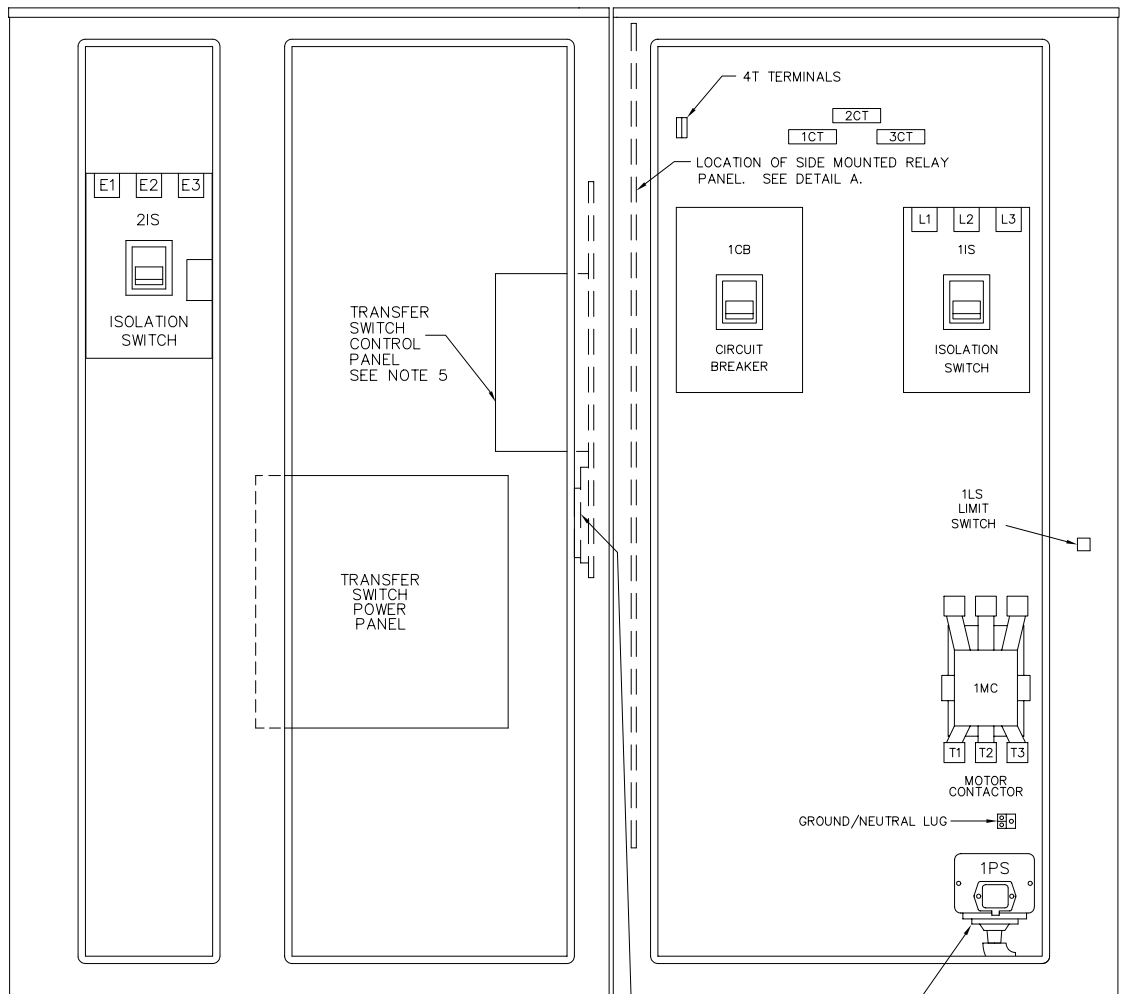


1T*
FIELD
TERMINALS

- | | | |
|----|----|---|
| 1 | 1 | N.O. CONTACT. OPENS ON LOSS OF CONTROLLER POWER |
| 2 | 2 | |
| 3 | 3 | N.C. CONTACT. CLOSSES ON LOSS OF CONTROLLER POWER |
| 4 | 4 | |
| 5 | 5 | N.O. CONTACT. CLOSSES WHEN PUMP RUNNING |
| 6 | 6 | |
| 7 | 7 | N.C. CONTACT. OPENS WHEN PUMP RUNNING |
| 8 | 8 | |
| 9 | 9 | REMOTE START. PUMP WILL START WHEN SWITCH CLOSSES |
| 10 | 10 | |
| 11 | | |
| 12 | | |
| 13 | | |
| 14 | | |
| 15 | | |
| 16 | | |
| 17 | | |
| 18 | 18 | N.O. CONTACT. CLOSSES ON PHASE REVERSAL |
| 19 | 19 | |
| 20 | 20 | N.C. CONTACT. OPENS ON PHASE REVERSAL |
| 21 | 21 | |
| 22 | 22 | N.O. CONTACT. OPENS ON MOTOR OVERLOAD |
| 23 | 23 | |
| 23 | 23 | N.C. CONTACT. CLOSSES ON MOTOR OVERLOAD |
| | | |



NOTES:

- POWER MONITOR SIGNALS ANY OF THE FOLLOWING FAILURES:
LOW VOLTAGE
LOSS OF VOLTAGE
PHASE REVERSAL
- 1T FIELD TERMINALS ARE LOCATED AT BOTTOM OF SIDE MOUNTED RELAY PANEL. SEE DETAIL A
- 2T, 3T & MANUAL STOP JUMPER ARE LOCATED IN THIS AREA.
- EXTRA (OPTIONAL) TERMINALS ARE LOCATED IN THIS AREA.
- SEE ASCO OPERATION MANUAL FOR LOCATION OF DIP SWITCHES.

- | | |
|---|---------------------------------------|
| G | EMERGENCY ISOLATION SWITCH OPEN |
| H | |
| J | TRANSFER SWITCH IN EMERGENCY POSITION |
| K | |
| L | OPEN FOR ENGINE START |
| M | |
| N | CLOSE FOR ENGINE START |

MAXIMUM MOTOR HORSEPOWER	VOLTS AC					PRIMARY WIRE SIZE	
	200V	208V	220V - 240V	380V - 415V	440V - 480V	LINE TERMINAL WIRE SIZE PER PHASE	SERVICE ENTRANCE GROUND LUG WIRE SIZE
	250 HP	250 HP	250 HP	350 HP	500 HP	(3) #3/0-400 MCM	(2) #6-250 MCM
			300 HP		600 HP	(4) #4/0-500 MCM	(2) #6-250 MCM

DRAWN SR	5-22-98		METRON, INC. DENVER, CO.
CHECK KH	5-22-98		
APPD X.B.	5-22-98		
INTERNAL LAYOUT & EXTERNAL HOOKUP MODEL M300, UTILITY/GEN-SET ELECTRIC FIRE PUMP CONTROLLER WITH ASCO TRANSFER SWITCH, GROUP 1		CH33027C	
		SCALE N.T.S SHEET 1 OF 1	